

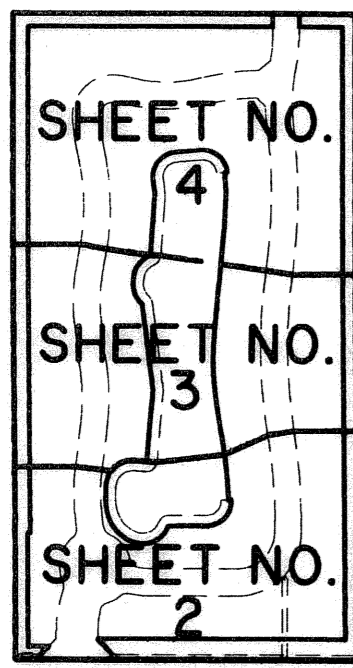
PIPER'S CAY

WYNDAM II A PLANNED UNIT DEVELOPMENT
BEING A REPLAT OF A PORTION OF MODEL LAND COMPANY SUBDIVISION
OF SECTION 2, TOWNSHIP 44 SOUTH, RANGE 42 EAST, AS RECORDED
IN PLAT BOOK 5, PAGE 80, PUBLIC RECORDS OF PALM BEACH COUNTY, FLORIDA.

SHEET 2 OF 4

SEPTEMBER, 2005

169



KEY MAP
NOT TO SCALE

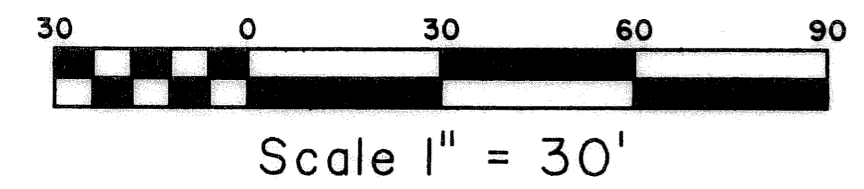
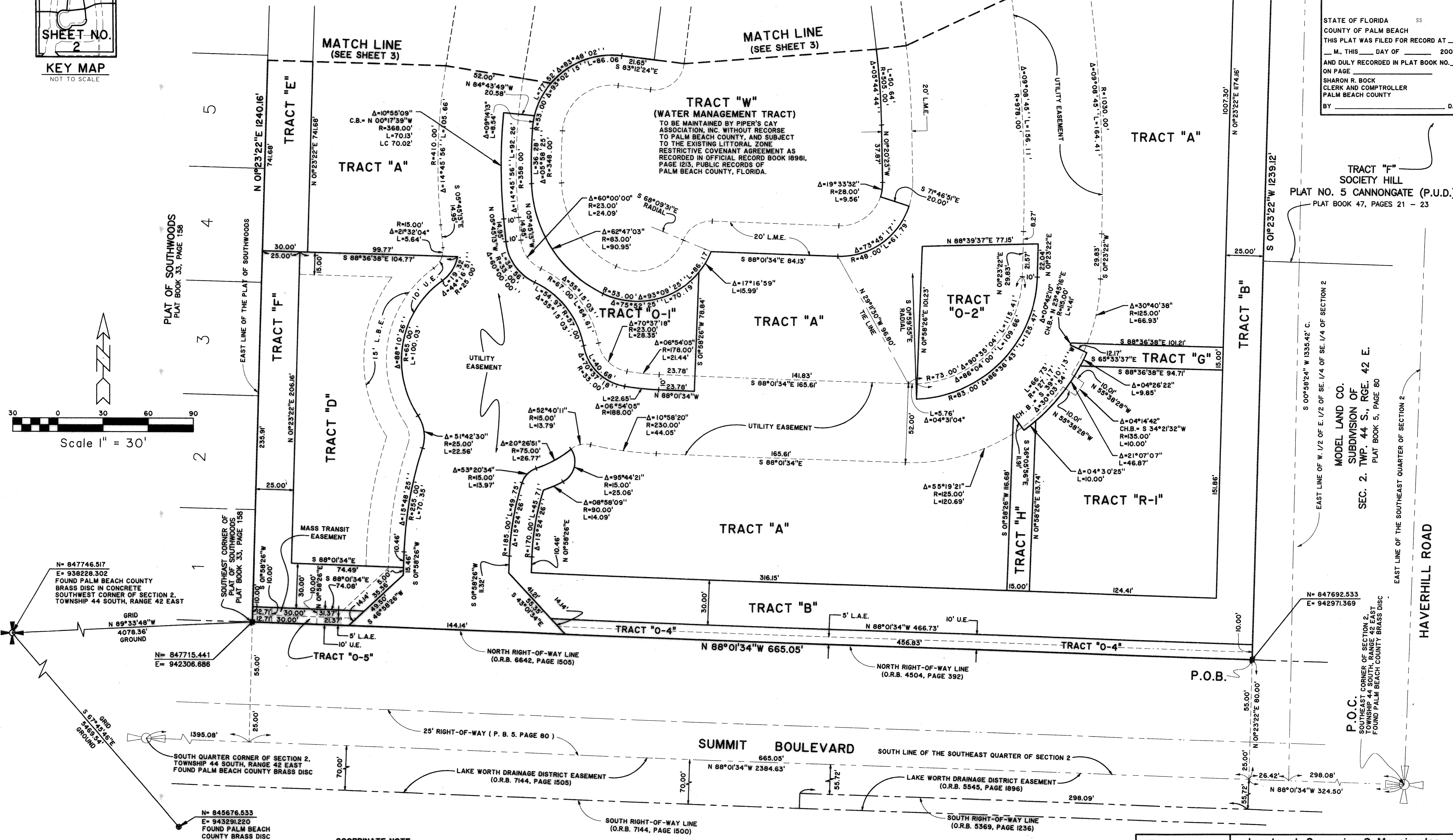
STATE OF FLORIDA
COUNTY OF PALM BEACH
THIS PLAT WAS FILED FOR RECORD AT
___ M., THIS ___ DAY OF ___ 2005
AND DULY RECORDED IN PLAT BOOK NO. ___
ON PAGE ___
SHARON R. BOCK
CLERK AND COMPTROLLER
PALM BEACH COUNTY
BY _____ D.C.

TRACT "F"
SOCIETY HILL
PLAT NO. 5 CANNONGATE (P.U.D.)
PLAT BOOK 47, PAGES 21 - 23

TRACT "G"
MODEL LAND CO.
SUBDIVISION OF
SECTION 2, TWP. 44 S., RGE. 42 E.
PLAT BOOK 5, PAGE 80

P.O.C.
SOUTHEAST CORNER OF SECTION 2,
TOWNSHIP 44 SOUTH, RANGE 42 EAST
FOUND PALM BEACH COUNTY BRASS DISC
N= 847692.533
E= 942971.369

HAVERHILL ROAD

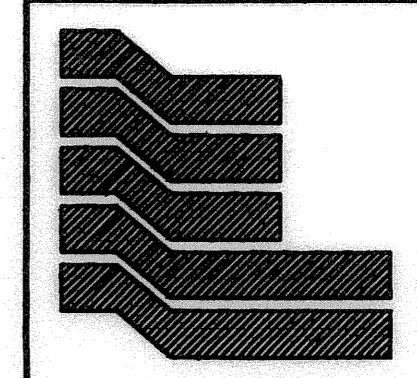


N= 847746.517
E= 938228.302
FOUND PALM BEACH COUNTY
BRASS DISC IN CONCRETE
SOUTHWEST CORNER OF SECTION 2,
TOWNSHIP 44 SOUTH, RANGE 42 EAST

N= 847715.441
E= 942306.686

N= 845676.533
E= 943291.220
FOUND PALM BEACH
COUNTY BRASS DISC
AFFUSO

COORDINATE NOTE:
STATE PLANE COORDINATES SHOWN ARE GRID DATUM, NAD 83 1990
ADJUSTMENT, FLORIDA EAST ZONE, COORDINATE SYSTEM 1983 STATE
PLANE, TRANSVERSE MERCATOR PROJECTION
LINEAR UNIT = US SURVEY FEET
ALL DISTANCES ARE GROUND
SCALE FACTOR = 1.00003527
GROUND DISTANCE X SCALE FACTOR = GRID DISTANCE
BEARING BASIS GRID ZERO ROTATION



Landmark Surveying & Mapping Inc.
1850 Forest Hill Boulevard
Ph. (561) 433-5405 Suite 100 W.P.B. Florida
LB # 4396

PIPER'S CAY

SUBDIVISION PIPER'S CAY
BOOK 106 PAGE 164
FLOOD MAP # 105 B
QUAD # 22 ZONING PUD
SE ZIP CODE 33415
TAL 201 WYNDAM II
FUD NAME